

## Catchment Management

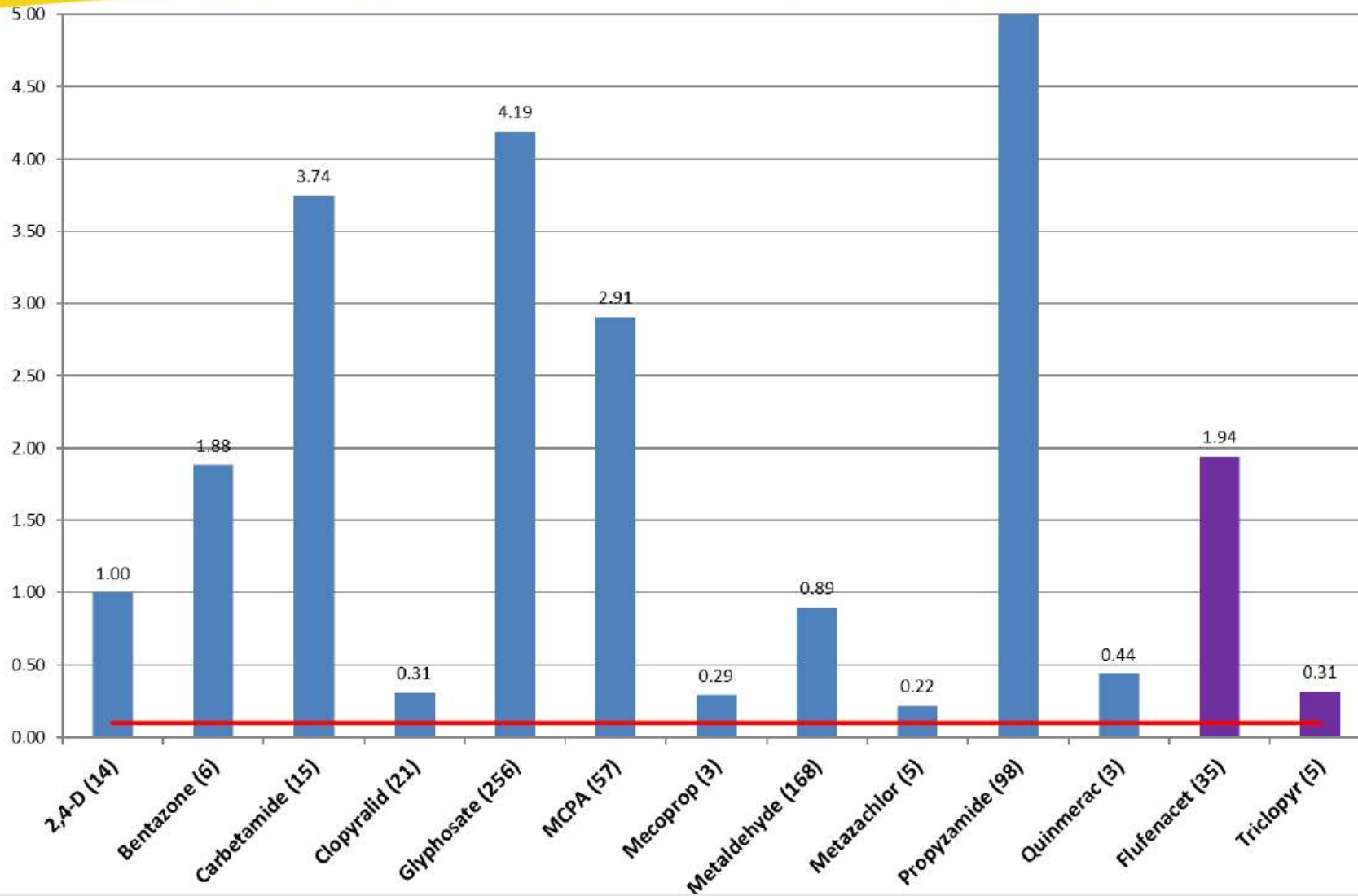
Reducing Oilseed Rape herbicides  
in water

Focusing on propyzamide

Danny Coffey  
Agricultural Advisor  
26<sup>th</sup> May 2021



# Combined Water Companies



- Data for August 2020 to January 2021
- 98 exceedances for propyzamide
- Highest result for propyzamide over  $17 \mu\text{g/L} = \times 170$  the Drinking Water Standard

# Options for mitigating diffuse losses from fields

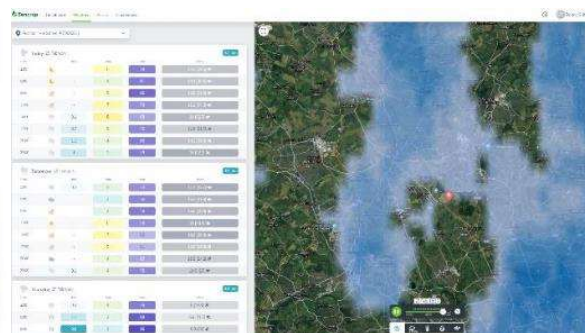
Resistance testing and reducing propyzamide doses?



Contour ploughing & Managing tramlines



Weather forecasting & spray timings



# Funding to grow alternative break crops in High- Risk areas

Approximate Total Area For Substitution (Ha): \*

Select substitute crop \*

If a spring crop is chosen are you planning to proceed with cover crops? \*

Are these locations under-drained? \*

Please add any other comments about your crop substitution plans and your cover cropping choice if selected to support your bid

- Select Criteria
- Winter linseed
- Spring peas
- 2 year grass ley
- 3 year grass ley
- Spring beans**
- Spring OSR
- Maize
- Other

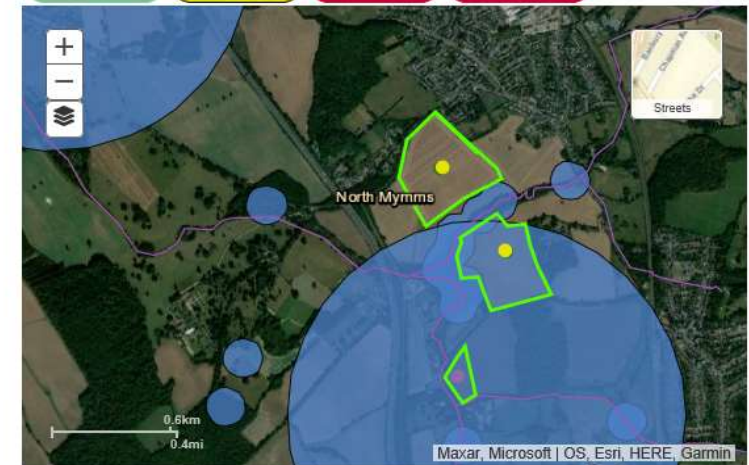
Yes

Cover crop = oats, phacelia, radish

on and off by clicking the layers button (three stacked squares icon) Please enter all fields you are willing to substitute but you may want to enter or group these in separate bids - where entering parts of fields you can draw round this using the 'draw outline' tool.

Search :

- Draw Outline
- Substitution
- Clear All
- Undo Last



Expand Map

Please enter your price below for the proposed crop substitutions. - **This is subject to confirmation of the field areas (ha)**

This is a competitive funding scheme and bids will be assessed based on their relative cost effectiveness to reduce pesticide risk to water. After clicking Submit you may enter further bids. Entered bids can be found listed at the top of the page.

Price Per Hectares Bid \*

Total Price (£) *i*

**£3,000.00**

A photograph of a rural landscape. In the foreground, a muddy, rutted path leads towards a small pond. The pond is surrounded by lush green grass and some bushes. In the background, there is a line of trees and a dark, overcast sky. Two black rectangular boxes are placed on the left and right sides of the image, partially obscuring the background. The text "Any questions" is centered in the middle of the image in a white, sans-serif font.

Any questions